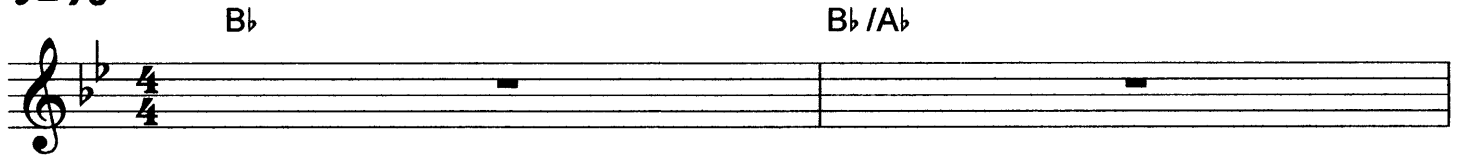


I Know Who I've Believed In

Words: Daniel W. Whittle (1840-1901)

Music: Daniel Kutschera

♩ = 70



know



know not why God's won - drous grace To me He has made known, Nor
know not how the Spi - rit moves, Con - vin - cing men of sin, Re -



why, un - wor - thy, Christ in love Re - deemed me for His own. I
veal - ing Je - sus through the Word, Cre - a - ting faith in Him. I

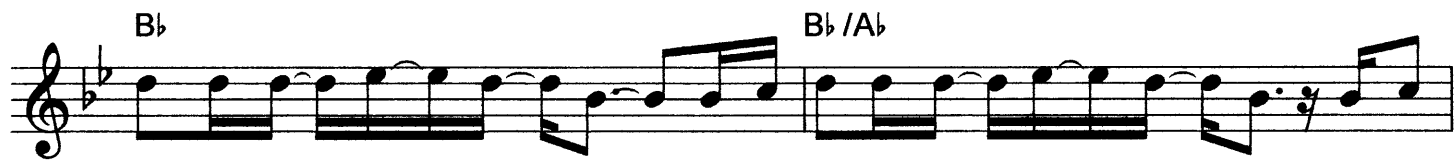


know not how this sa - ving faith To me He did im - part, Nor
know not what of good or ill May be re - served for me - of



how be - lie - ving in His Word Brought peace with - in my heart. But I
wea - ry ways or gol - den days Be - fore His face I see. But I

B \flat B \flat / A \flat



know who I've be - lieved in, I'm per-sua-ded He is a - ble To keep

G \flat Δ 9 Fm7 E \flat / F



that which I've com - mit - ted Un-to Him un - til that day. But I

B \flat B \flat / A \flat



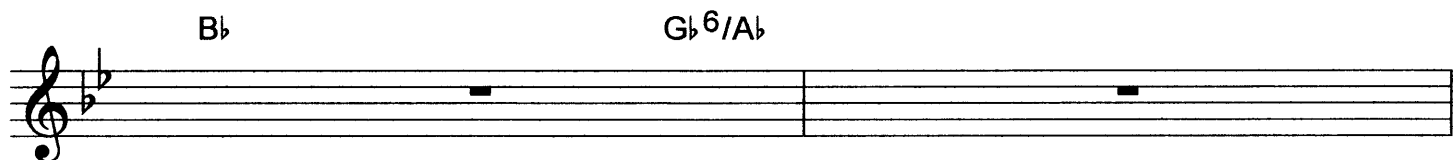
know who I've be - lieved in, I'm per-sua-ded He is a - ble To keep

G \flat Δ 9 Fm7 E \flat / F



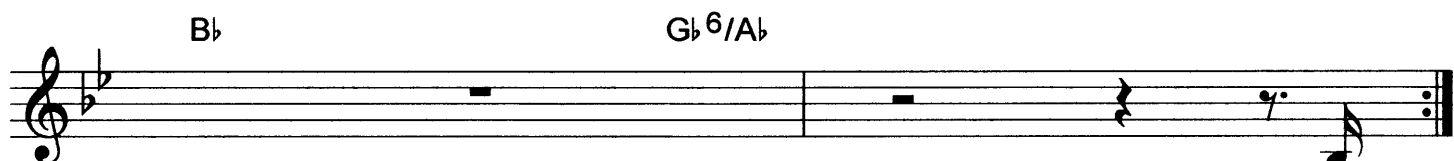
that which I've com - mit - ted Un-to Him un - til that day.

B \flat G \flat 6 / A \flat



—

B \flat G \flat 6 / A \flat



—

I